

GET AHEAD

EXPAND YOUR PORTFOLIO AND GET FIRST-HAND
UPDATES ON AYALA LAND'S ESTATES AND
COMMERCIAL AND INDUSTRIAL LOT INVESTMENT OPPORTUNITIES.



AN ENDURING VISION

To enrich the lives of every Filipino, Ayala Land sets its sights beyond the horizon, creating sustainable communities for people and businesses to grow. A reliable and trusted developer in the Philippines, Ayala Land lays the foundation to expand opportunities and nurture investments over time.



WHY INVEST IN AYALA LAND ESTATES

Properties that appreciate
over time

Dynamic environments
for business and investment

Communities that nurture
a sense of place and belonging

Expanding investment possibilities

Ayala Land creates environments for enterprise that places businesses at the core of established and emerging mixed-use communities, a strategic location accessible to a diverse range of markets.





Strategic Partnerships

Schools

Civic Facilities

Corporate
and Government Offices

Healthcare

Lifestyle and Entertainment

FOR ENTERPRISES
WITH SPACES FOR
RESIDENTIAL USE

Shophouse Lots

FOR LARGE-SCALE
BUSINESSES IN PRIME
LOCATIONS

Commercial Lots

FOR LIGHT TO MEDIUM
INDUSTRIES

Industrial Lots

ALTARAZA

Total Land Area	40 hectares
Location	San Jose Del Monte, Bulacan

ARCA SOUTH

Total Land Area	74 hectares
Location	Taguig, Metro Manila

CROSSROADS

Total Land Area	80 hectares
Location	Plaridel Bypass Road, Bulacan

ARILLO

Total Land Area	62 hectares
Location	Nasugbu, Batangas

AREZA

Total Land Area	92 hectares
Location	Lipa, Batangas

SOUTH COAST CITY

Total Land Area	26 hectares
Location	Cebu

CRESENDO

Total Land Area	290 hectares
Location	Tarlac

ALVIERA

Total Land Area	1,800 hectares
Location	Porac, Pampanga

VERMOSA

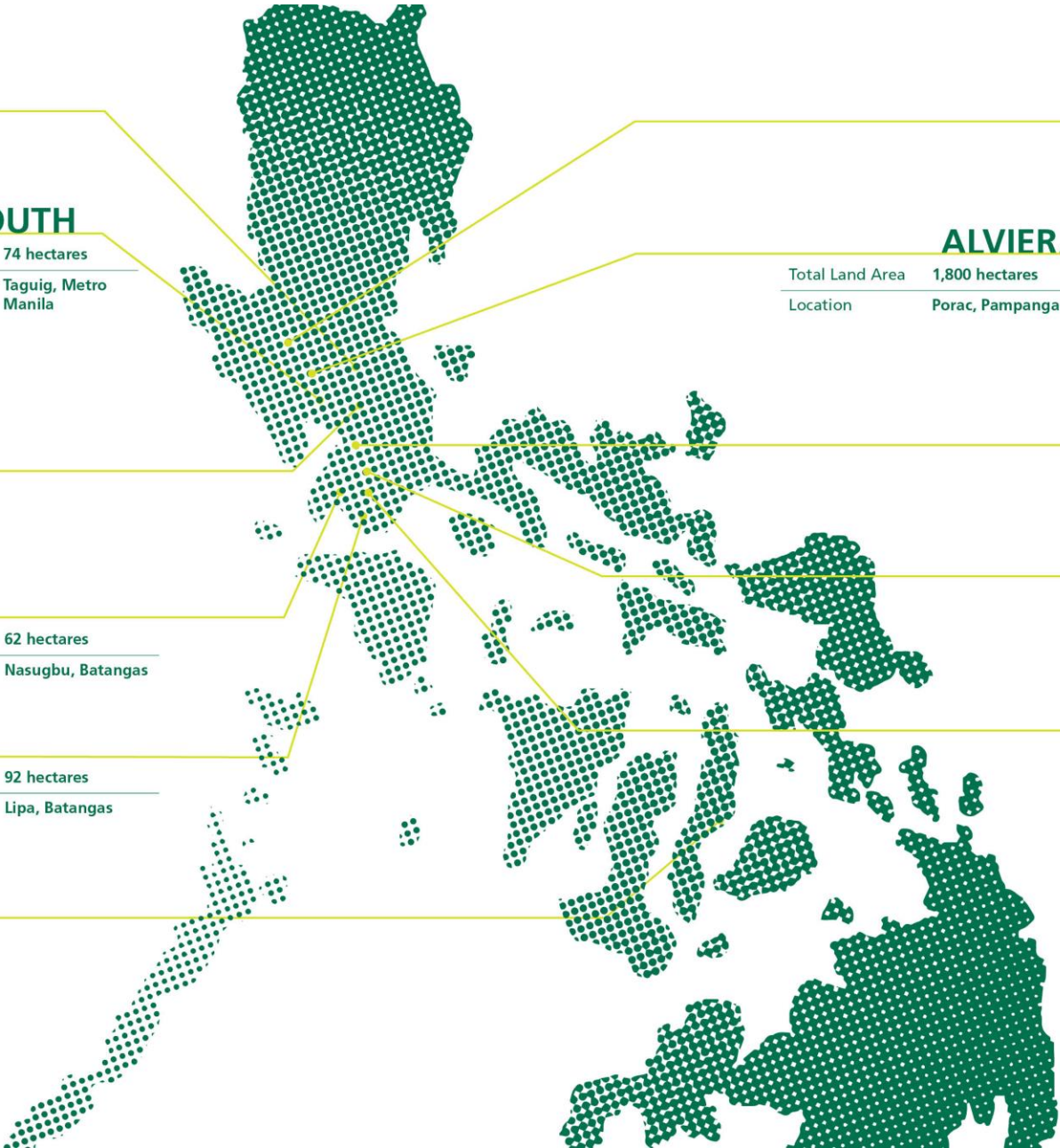
Total Land Area	725 hectares
Location	Imus and Dasmariñas, Cavite

BROADFIELD

Total Land Area	171 hectares
Location	Biñan, Laguna

NUVALI

Total Land Area	2,400 hectares
Location	Santa Rosa, Cabuyao, and Calamba, Laguna



Central Business District **at the heart of the Metro.**

3rd estate of ALI's triumvirate of CBDs

7km from Makati CBD

5km from BGC

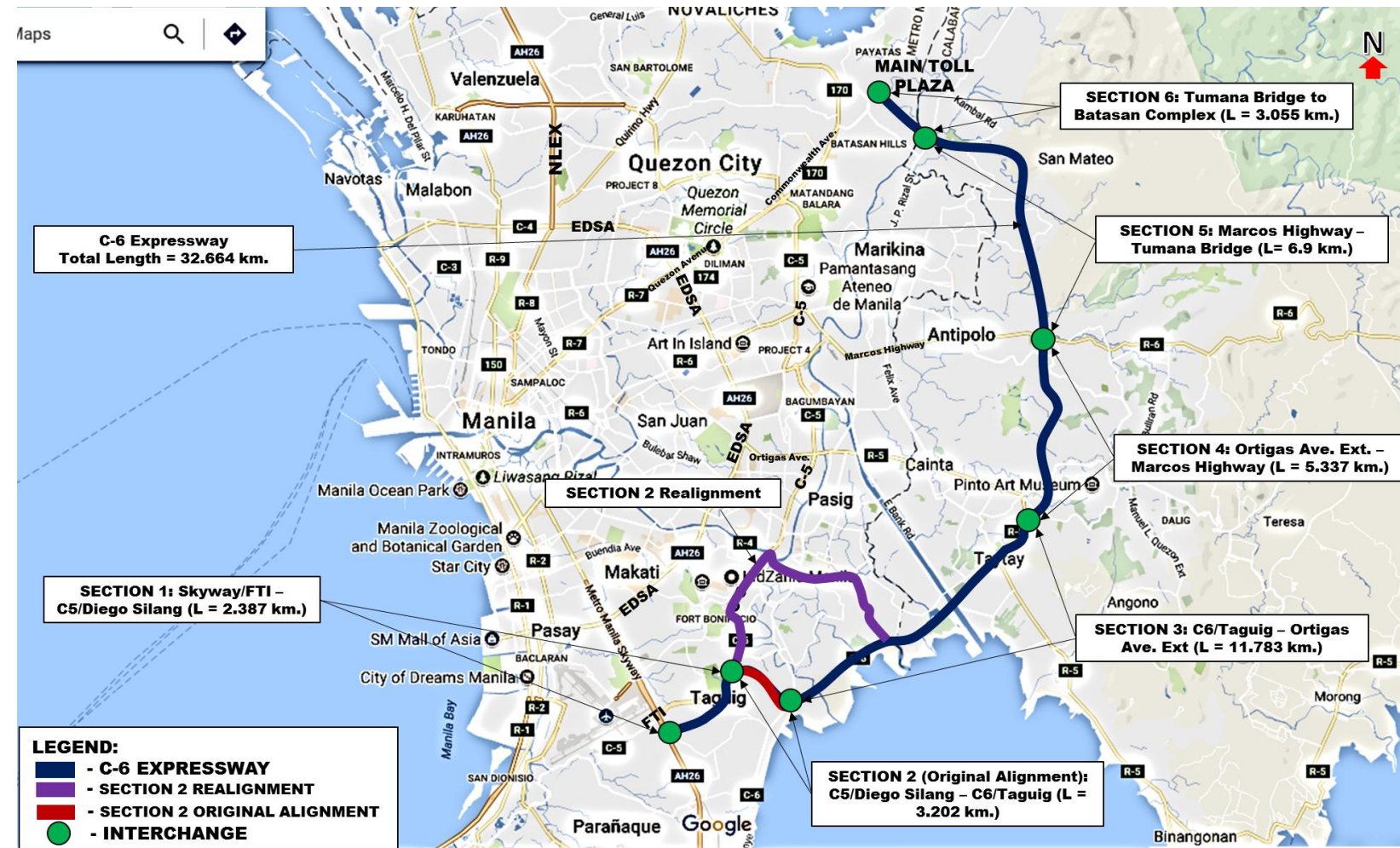
4.6km from NAIA

Accessible thru the ff. planned government projects:

- Southeast Metro Manila Expressway (C6)
- Metro Manila Subway (via FTI Station)
- North South Commuter Railway (via FTI Station)



Access: Southeast Metro Manila Expressway



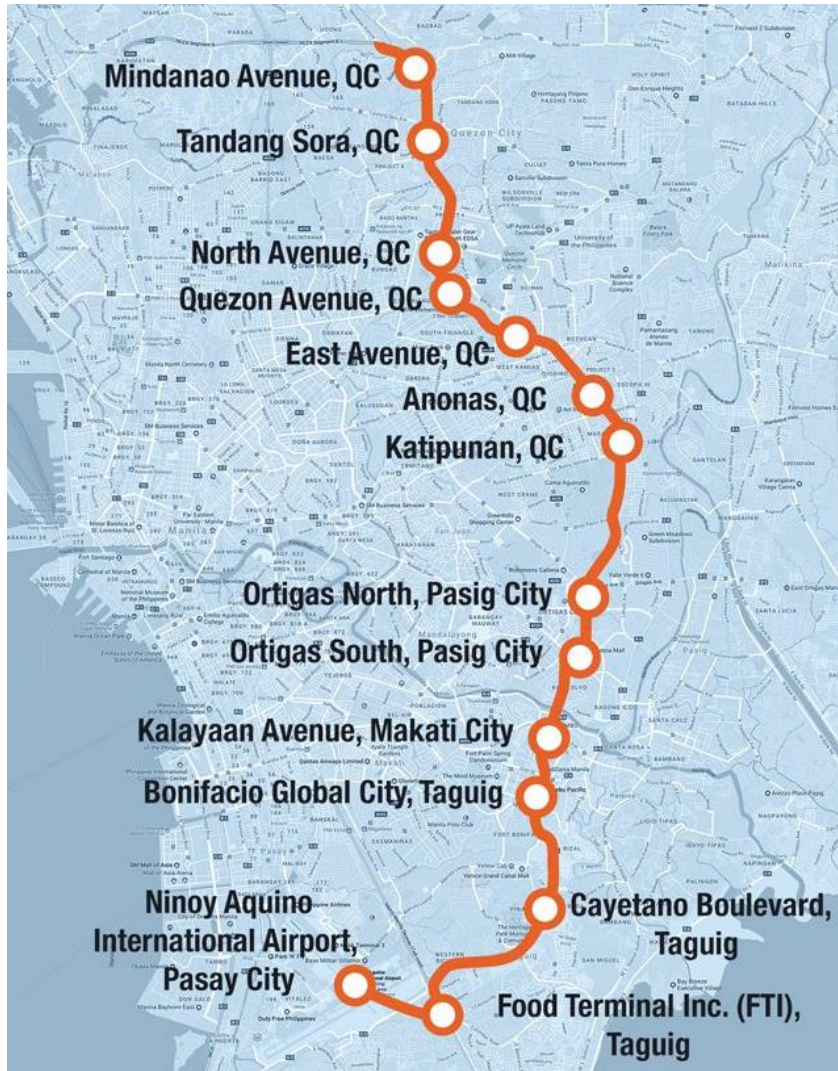
Overview

32.66km toll road project from the Skyway (Taguig) to Batasang Pambansa.

Status

Ongoing right of way acquisition by the DPWH.

Access: Metro Manila Subway: 2029



Overview

33km train system connecting QC to Pasay

Projected Daily No of Passengers
519,000 pax

Current Status

Ongoing tunnel boring from Mindanao Ave to East Ave, QC

Access: North South Commuter Railway: 2029



Overview

147km railway system connecting Clark to Calamba

Projected Daily No of Passengers

800,000 pax

Current Status

Ongoing construction at Malolos - Clark



A 74 hectare master-planned business and lifestyle community

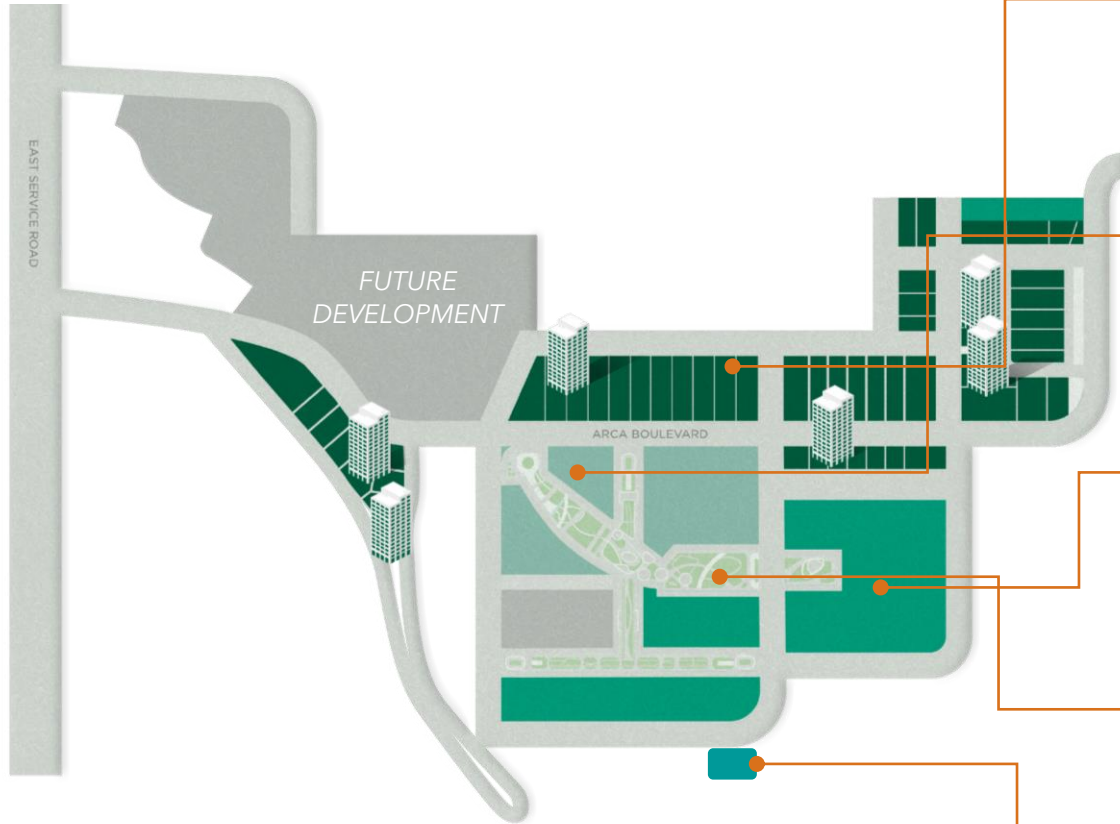
A contemporary development that synchronizes parks and open spaces with residential and commercial environments

ALI's 3rd Central Business District



MASTERPLAN

Where demands of contemporary lifestyles are
coordinated, synchronized, and integrated



COMMERCIAL DISTRICT

World-class & certified office developments



LIFESTYLE DISTRICT

Commercial developments in various formats



RESIDENTIAL DISTRICT

Ayala Land Premier, Alveo, & Avida offerings



ARCA MAIN STREET

Prime amenity connecting the estate



HEALTHWAY CANCER CARE HOSPITAL

Dedicated comprehensive cancer care



Commercial District

COMPLETED OFFICES

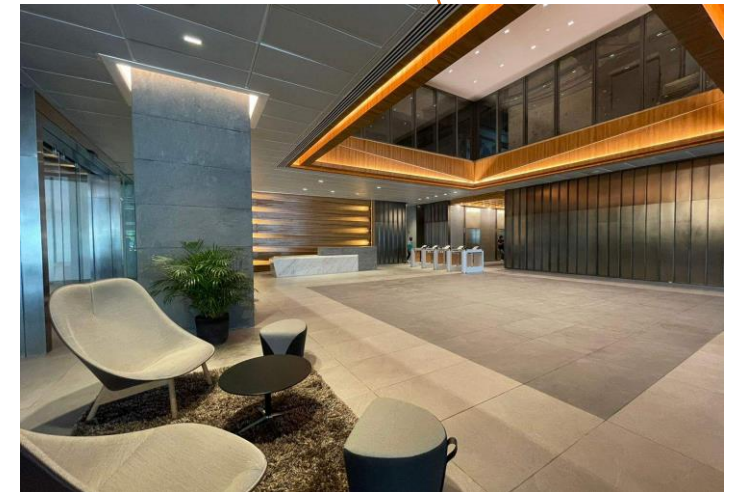
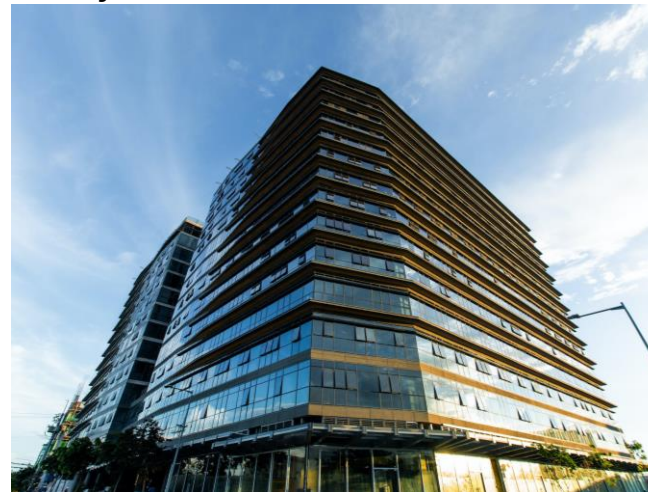
MDC Corporate Center



Manta Corporate Plaza



Savya Financial Center



Commercial District

UPCOMING OFFICES

Bamberton Center



Tryne Enterprise Plaza

Residential District

6 RESIDENTIAL PROJECTS

**Over 5,000 units sold and
2,500 units turned over**

 **AyalaLand** PREMIER



ALVEO



Avída



Healthway Cancer Care Hospital (HCCH)

is the Philippines' first comprehensive cancer specialty hospital. The 100-bed hospital is founded on the belief that every cancer patient deserves a human-centric approach to cure; it also aims to address a wide range of oncologic issues, from screening and diagnosis to treatment and management to end-of-life care. The facility is devoted to fostering and seeing every patient beyond their sickness; which also assures to provide a safe and infection-free environment for them and their family during their visits and stays.



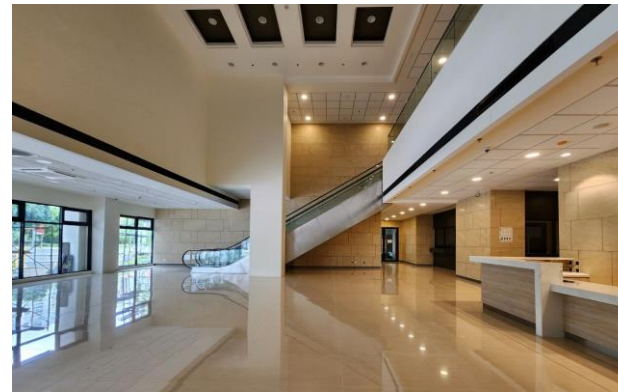
VISION

We will lead in making the Philippines healthy through human-centric care.



MISSION

We are an integrated health network providing transformative care that offers hope to our patients and higher purpose to our people.





INTEGRATED OUTPATIENT UNIT

An integrated OPD for the different cancer types is designed for efficient outpatient consultation services and minor procedures.

The breast center will offer breast cancer screening and diagnostics services, and will house digital mammography and ultrasound machines.

CANCER IMAGING CENTER

The center will provide the basic diagnostic equipment and nuclear medicine imaging procedures for general diseases, cancer screening and detection.

It will be equipped with X-ray, CT Scan, MRI, Gamma Camera and PET-CT machines

CANCER TREATMENT UNITS

The radiation oncology department provides radiation planning and treatment for cancer patients and will be fully equipped with a **CT Simulator, Linear Accelerators (LINACs)**

The Infusion Center will be a treatment unit with 18 infusion chairs, providing efficient administration of chemotherapy and other systemic agents.

OPERATING ROOM COMPLEX

The cancer hospital will have 4 operating theaters optimized for outpatient and inpatient procedures, promoting enhanced recovery after surgery (ERAS) for both minimally invasive and radical cancer surgery.



ENHANCED RECOVERY FACILITIES

A total of 100 beds available to accommodate patients for pre- and post- procedure recovery

A **12-bed ICU** optimized to aide in patient recovery of critically-ill cancer patients.

COMPREHENSIVE ANCILLARY SERVICES

Key ancillary services will be available to support and complete the cancer hospital's cancer care services.

These auxiliary services include a **fully equipped laboratory, outpatient and inpatient pharmacies, an emergency room, and post-cancer care services.**



Lifestyle District

MEMBERSHIP SHOPPING



Lifestyle District

PARKS AND OPEN SPACES



Ayala Malls

ARCA SOUTH : 2025



Upcoming DEVELOPMENTS



Note: Pegs only, Subject to change without prior notice

Infrastructure



Meralco Substation

Telco Providers





Lot Information

Lot Size

2,079 sqm

Price/Sqm (vat ex)

PhP 550,000

Selling Price (vat ex)

PhP 1.143 BN

Prices and terms are subject to change without prior notice. Sample computation sheets are available upon request from your broker manager.

